

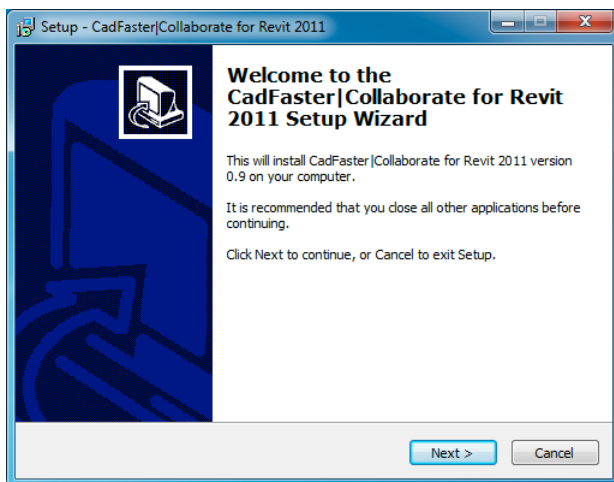
# CadFaster | Collaborate for Autodesk® Revit® – Start-up Guide

This document describes the following phases in the use of CadFaster|Collaborate plug-in tool:

1. Plug-in installation on a CAD workstation (plug-in is needed for exe generation, not for viewing)
2. CadFaster EXE file generation (on CAD workstation using the plug-in)
3. CadFaster EXE file distribution to stakeholders in the collaboration process
4. Viewing and navigating the distributed CadFaster EXE files
5. Annotating (adding annotations and viewing them)
6. Co-viewing (with one Host and up to 9 Clients)

## 1 INSTALLATION

CadFaster|Collaborate is installed from an installation web link. Run the file from the link provided. Installation wizard will guide you through the installation process. Revit® should be closed during the installation.



You are recommended to select option 'Repair Add-In Manager for Autodesk Revit 2011' when the following dialog appears.

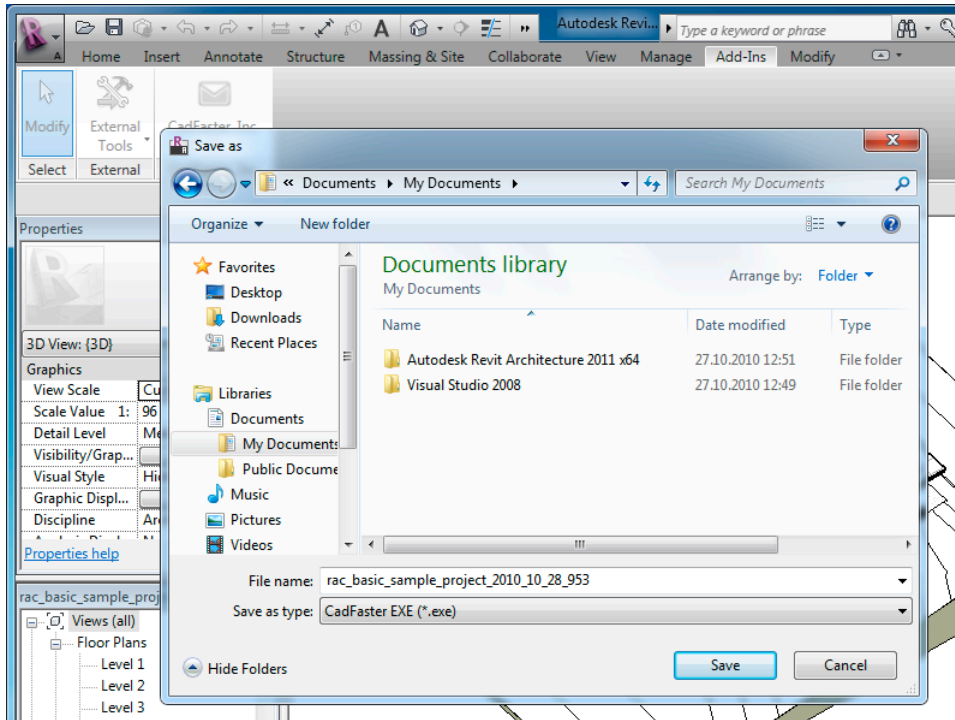


CadFaster|Collaborate will create a new Tool named 'CadFaster, Inc.' in the Revit® Add-Ins Ribbon. This Tool opens the 'Save as' dialog box used in creating CadFaster EXE files. CadFaster EXE will also appear as one of the possible formats when saving files from Application Menu.

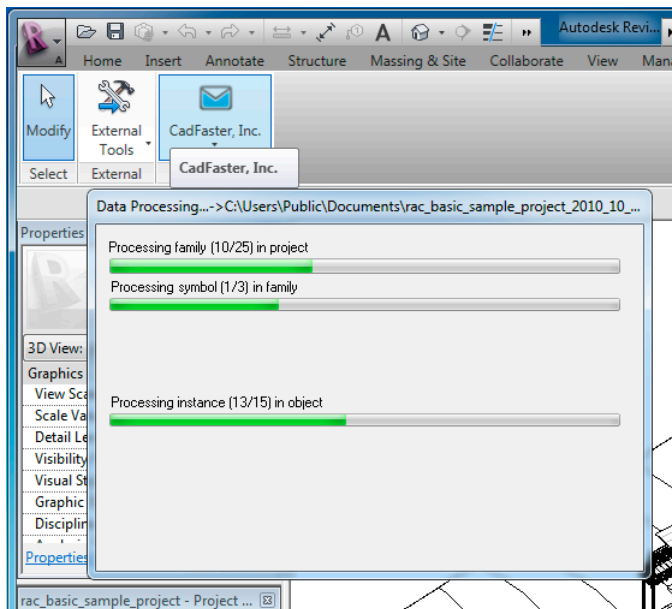
You will need to activate the subscription with the Pin Code provided when you start to translate a file to CadFaster EXE for the first time. So you will not need the Pin Code during the installation process.

## 2 CADFASTER EXE FILE GENERATION

To create a CadFaster EXE file you need to press the button ‘CadFaster, Inc.’ in the Add-Ins Ribbon.



Once you select the location for the CadFaster EXE file, plug-in starts the translation process. This may take several minutes depending on the file size and complexity. Translation compresses the 3D file and embeds it into a viewer.



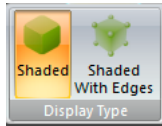
## 3 CADFASTER EXE FILE DISTRIBUTION

Distribute a link to the generated CadFaster EXE file to every person you would like to involve in the collaboration process. As a file sharing solution you may use shared folder, intranet, a web sharing solution (SkyDrive, Dropbox etc), or email (please note that some spam filters may block EXE files and large files of any type).

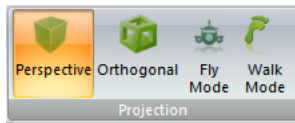
## 4 VIEWING AND NAVIGATING

You can open CadFaster EXE files on any Windows computer without the need for any installations ('Run' directly from web link or double-click downloaded file). You will have the following options for navigating and manipulating the 3D model.

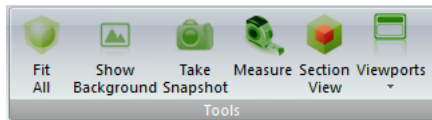
**Display Type:** choose between Shaded and Shaded With Edges



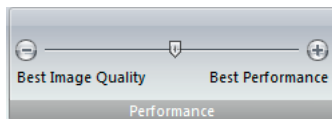
**Projection:** choose different navigation styles



**Tools:** choose tools to help in design verification



**Performance:** optimise performance if needed

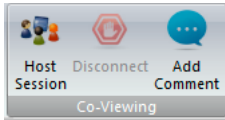


### Navigation:

- **Rotate** the model (in Perspective and Orthogonal projection): hold primary mouse button and move the mouse
- **Zoom** (in Perspective and Orthogonal projection): hold secondary mouse button and move mouse up (zoom in) and down (zoom out)
- **Pan** (in Perspective and Orthogonal projection): hold primary and secondary mouse buttons and move the mouse
- **Fly** into the model (in Fly Mode): hold secondary mouse button and move the mouse up. You can move backwards by moving the mouse down. Turn to different direction by holding the primary mouse button and moving the mouse
- **Walk** into the model (in Walk Mode): use arrow keys on your keyboard to walk forward and backward and change direction. Change level by holding shift key while pressing up or down keys. Strafe (move sideways) by holding shift key while pressing left or right keys
- **Measure** (when Measure tool selected): hold primary mouse button to choose starting point and release it at the finishing point
- Create a **section view** (when Section View tool selected): rotate the model and choose appropriate section plane. Move the plane by holding primary mouse button and moving mouse up or down. To remove the section plane click on the secondary mouse button and choose "Hide Section Plane"
- **Hide** objects: choose an object by clicking the primary mouse button, then click secondary mouse button and choose "Hidden". Alternatively you can choose objects in the product tree on the left and then hide/unhide them
- Make objects **transparent**: choose an object by clicking the primary mouse button, then click secondary mouse button and choose "Transparent". Alternatively you can choose objects in the product tree on the left and then make them transparent

## 5 ANNOTATING

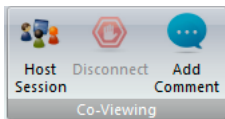
Choose an object by clicking on it and then press 'Add Comment' in the Co-Viewing toolbar. This will open a comment box where you can write your comment. You need to confirm the comment by pressing ✓ button on the upper right corner. The comment will be then sent to Cloud server and it will be visible to others immediately.



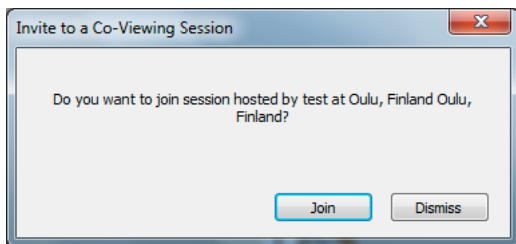
You can view existing annotations by expanding the 'Root' directory on the left (by clicking the + sign) and then expanding 'Annotations'. Clicking on an annotation will show you the annotation thread in the view that it was made in. You can also continue the thread by adding your comment under the previous comment.

## 6 CO-VIEWING

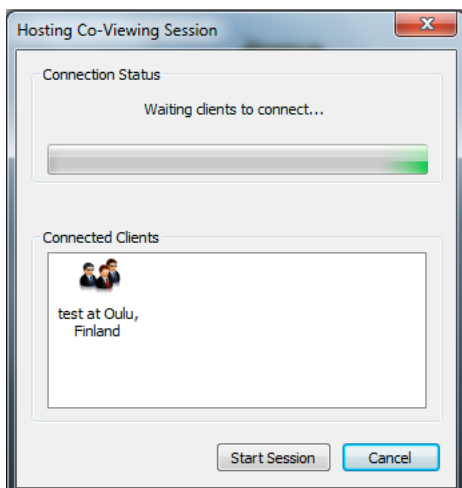
You can initiate a co-viewing session by pressing 'Host Session' in Co-Viewing toolbar.



Everyone who has the same CadFaster EXE file open will get the following invite.



As soon as Clients click 'Join' the Host will be able to start the co-viewing session by clicking 'Start Session'.



Host can use the navigation commands as described earlier. Host can also click on the annotations to show them to Clients.

Client can click on 'Host Session' button during co-viewing to request a Host role (pending current Host approval).